

# ARCHDIOCESE OF PHILADELPHIA

---

## SECRETARIAT FOR TEMPORAL SERVICES

222 North Seventeenth Street • Philadelphia, Pennsylvania 19103-1299 • (215) 895-3450 • Fax (215) 895-3458

CATHOLIC CEMETERIES OFFICE

### FOREWORD

The following Rules and Regulations for Mausoleums and above ground crypts were drafted in a spirit of cooperation between the Memorial Industry and the Catholic Cemeteries of the Archdiocese of Philadelphia.

This work was approached purely from the viewpoint of construction as it affects the life and maintenance of the building and is not intended to control the individual design of the building other than as the appearance relates to the lasting and maintenance qualities of the structure.

The accompanying regulations have been carefully compiled to be used as guidelines for those planning the construction of a mausoleum or above ground crypts. Close cooperation should be exercised by the cemetery management and builders as both are interested in the lasting qualities of the building.

Thank you for your interest and cooperation in the past and for your help and support in the future in preserving the beauty and dignity which we feel is appropriate for the Catholic Cemeteries.

**General:**

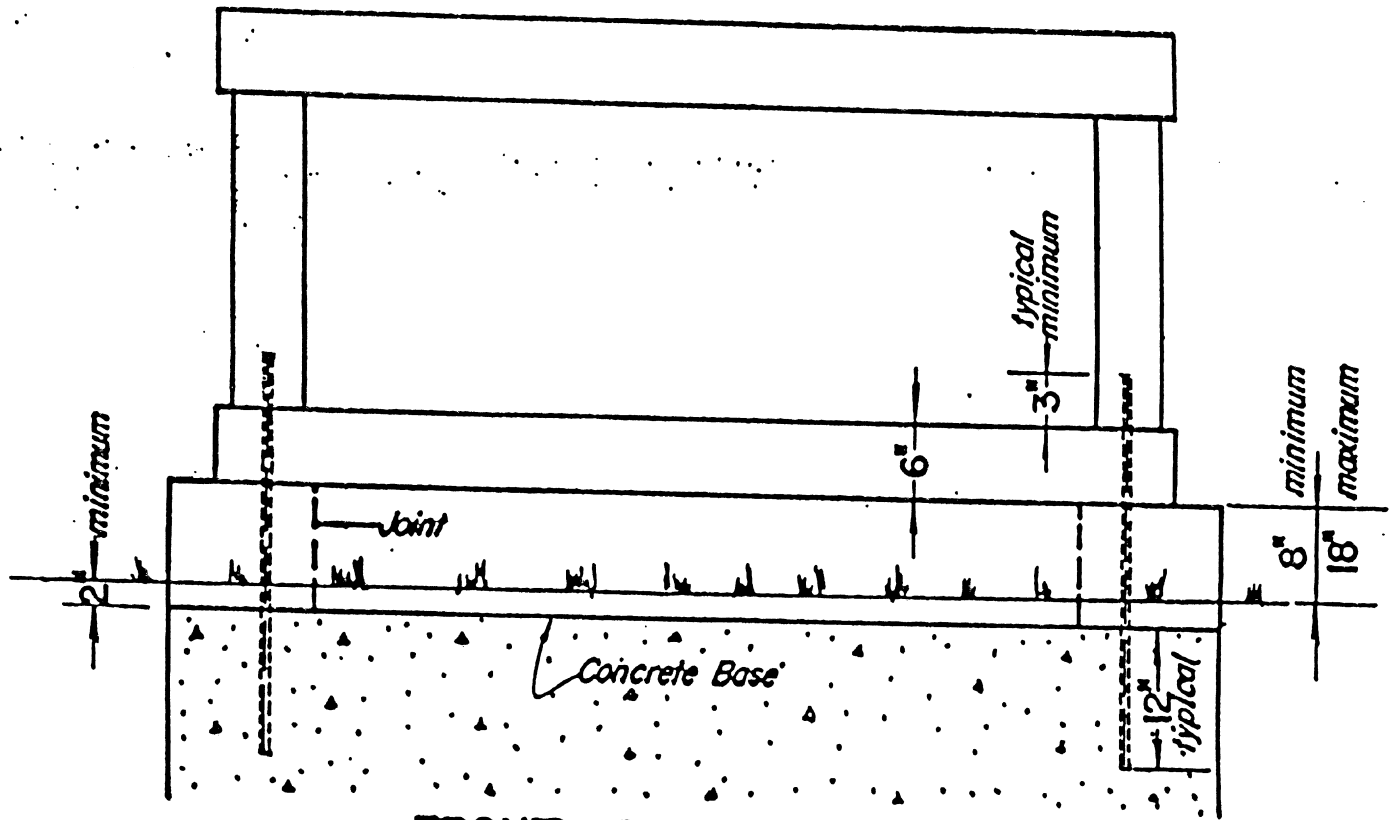
1. Mausoleums or above ground crypts shall be constructed only on lots so designated by the cemetery authority.
2. Detailed plans of specifications, material and location on plot must be presented in duplicate together with a copy of the manufacturer's guarantee and the quarrier's warranty to the cemetery office for approval.
3. Material, design, finish, inscription, and symbolism must meet with the approval of the cemetery authority.
4. All material must be of highest quality and workmanship. Faulty material or workmanship will be renewed or replaced at the selling dealer's expense.
5. All material and assembly must be unconditionally guaranteed, with no time limit.
6. Contractors and selling dealers must present evidence of their insurance coverage (liability and property insurance) by stating the name of the parent carrier and the policy number on sketches.
7. Drawings must include all four sides of the memorial.
8. The Cemetery Office consulting engineer's fee will be made with the billing for the foundation charge.
9. An endowment of  $\frac{1}{2}$  the cost of the building or \$10,000.00 whichever is lower, is payable before construction can begin.
10. All materials used in mausoleums shall be cut to fit together in a generally workmanlike manner; joints on exterior not more than  $\frac{3}{16}$ ", marble interior  $\frac{1}{8}$ ".
11. Minium size plot for the construction of a mausoleum is 30' x 40'.
12. Interment spaces on the outside of mausoleum sites 30' x 40' will depend on the size of the mausoleum constructed on the plot, but will be opened for one interment only.

13. When an interment is made in a family mausoleum or above ground crypt, the crypt must be hermetically sealed with a permanent bonding material.

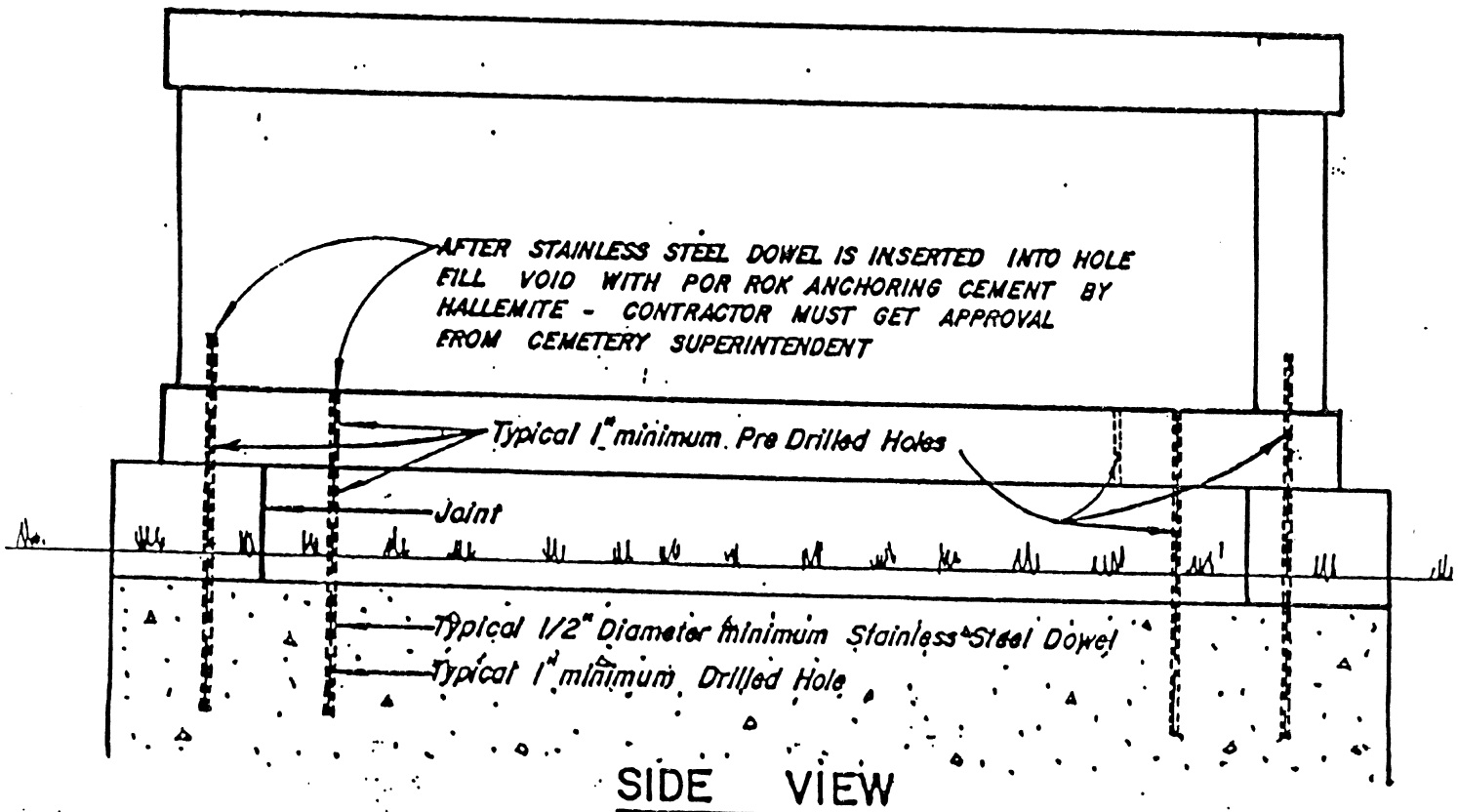
**A. Above Ground Crypts**

- a) Only monumental grade granite can be used in the construction of above ground crypts.
- b) Above ground crypts are limited to four crypts, two bottom and two top.
- c) The entrance of all crypts must be in the rear.
- d) The base must be one piece of granite not less than 8" thick.
- e) Walls and roof stones must be 8" thick for crypts assembled on site; 6" thick one piece walls and roof are permitted with factory assembled units.
- f) All exterior surfaces must be polished or steeled with wire sawed or equivalent finish with the exception of the sides of the base which can be rock.
- g) All shelves and shutters must be granite.
- h) Once the building is erected in the cemetery additional crypts cannot be added.
- i) Minimum size plot for the construction of above ground crypts is 20' x 18'.
- j) Interments on the outside of the crypts on 20' x 18' lots are limited to two graves for one interment each.

# PRE-ASSEMBLED ABOVE GROUND CRYPTS



FRONT OR REAR VIEW



SIDE VIEW

**B. Alternate Plan - Pre- Assembled Above Ground Crypts**

Please Note:

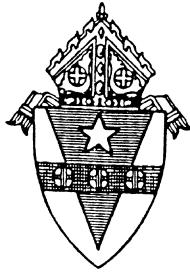
- 1) This plan can be used only for above ground crypts. It does not apply to mausoleums.
- 2) If this plan is used, it must conform exactly and in every detail to the specifications below and the enclosed detailed drawing regarding the use of a granite extension of the footing foundation, stainless steel dowels, por rok cement, minimum thickness of granite, as well as all other specified materials and procedures.

**Specifications for Alternate Plan**  
**Pre-Assembled Above Ground Crypts**

**CONTRACTOR** shall submit plan for approval to Diocesan Cemeteries Office. Plan shall indicate where all dowels and cramps are to be used as well as all other details and specifications.

**WHERE** the base sits directly on a concrete foundation or a concrete footing wall, the base shall be 8 inches thick granite.

**WHERE** the base is a minimum of 8 inches above finish ground surface and sits on a granite extension of the footing foundation, the base shall be a minimum of 6 inches thick granite. All granite stone shall have a minimum of two ½ inch diameter stainless steel dowels per stone. Dowels shall extend 12 inches into a drilled 1 inch diameter hole in the concrete foundation and extend through 1 inch diameter pre-drilled hole in the granite. After the base is set, written approval must be obtained from the Cemetery Superintendent in regards to the length and size dowels must be inserted in the holes with the superintendent watching and the void in the holes shall be filled with "Por-Rok" anchoring cement by Hallemite, 225, Summit Avenue, Montral, New Jersey, 07645.



# ARCHDIOCESE OF PHILADELPHIA

---

## SECRETARIAT FOR TEMPORAL SERVICES

111 South 38th Street • Philadelphia, Pennsylvania 19104-3179 • (215) 895-3450 • Fax (215) 895-3458

CATHOLIC CEMETERIES OFFICE

### SPECIFICATIONS FOR MAUSOLEUMS AND ABOVE GROUND CRYPTS

#### Material

1. The use of bronze is approved for doors, windows and grills of mausoleums and other mausoleum fixtures provided the bronze has been cast from an alloy containing no less than 85% copper or 5% lead. Suppliers shall be required to certify as to the analysis of the bronze. Stainless Steel and other non corrosive metals of proven durability may be used. All use of such metals must first be approved by the cemetery authority.
2. Glass used on door and as a protection for stained glass windows must be made of shatter proof plate glass. Lexan brand or similar material is also permitted for use within door window areas.
3. All door, fastening and lock design shall be approved by the Cemetery Office before fabrication.
4. Windows must be set in double bronze frame which may hold art glass window with outside shatter proof glass, Lexan or equivalent, as protection.
5. Interior: All pieces to be set in cement and clamped to a granite wall with copper or bronze wire 1/8" in diameter. No sand is to be used with cement in interior.
6. Ceiling: Where vestibule exceeds 3'6" in width bronze hangers with bronze rosettes should be used to prevent marble from warping and breaking, the number of hangers to be governed by the number of joints, one on each joint.
7. Dowels and Cramps: at least one dowel shall be used for each stone. When stones are over 18" in length, a minimum of two dowels will be required. Cramps shall be used for all adjoining stones which abut each other at the same elevation. (Dowel 3/4" x 6" long - bronze, cramps 8" x 1" x 3/16" turned down at least 1/2" at each end).

1. Flooring: Flooring to be set with a minimum pitch of  $\frac{1}{4}$ " to 10' - 0" toward the door threshold. Joint between step and floor slab to be left open, and holes provided through foundation for drainage. Floor slab either to be a minimum of 8" thick or to be supported by a concrete slab. It is not considered necessary to place a concrete slab under the catacombs.
2. Ventilation: Space of not less than 1  $\frac{1}{2}$ " for the free circulation of air to be provided between the interior finish and the exterior walls, these openings to be connected completely around the building, (that is, under the floor and over the ceiling). There should be an air space of at least 6" between the under side of the floor construction and the ground. When ventilation is used the exterior wall is to be provided with inlets at the bottom and outlets at the top and the ceiling to be provided with one bronze ventilator which may be combined with a rosette. The inlets and outlets are to be protected by bronze or aluminum weather-proofed ventilators. These, and ceiling rosette, are to be equipped with a screen. Each catacomb is to be vented top and bottom (bottom vents to be flush with crypt floor) into the continuous ventilation space around walls.
3. Crypts: Crypts shall have a minimum interior clear dimension of 2' - 8" x 7-8" x 2'-3". Backs, ends and other pieces of catacombs may be of slate, marble, granite or concrete. Slate or concrete must not be exposed on the interior of the mausoleums.
  - a) Slate: Slate which meets the requirements of ASTM-C-629 Standard Specifications for Structural Slat, shall be acceptable for use in mausoleum interiors.
  - b) Concrete: If concrete is used on the interior of crypts it must have a minimum thickness of 2".
  - c) Granite: When granite is used for crypt interiors the top slab and backs  $1\frac{1}{2}$ " thick. Ends and shelves 2" thick.
  - d) Marble: All marble used in interior to be of "Group A" as defined by the Marble Institute of America, and of hard selected stock, exposed surfaces to be free from stains, cracks or other imperfections and not patched or mended in any way. Minimum thickness of all marble to be  $1\frac{1}{4}$ ".

11. **Interior & Exterior**

Metal: Any strong non-deteriorating metal may be used if approved. Construction to follow that of bronze. Aluminum to be permitted for vents and joint covers. Aluminum doors to be of tube stock alloy 6061 or sheet stock alloy 5052. Aluminum doors treated to give a pewter finish should be protected by a clear anodized coating.

12. **Winter Setting:** No work will be done with concrete or mortar when the temperature is 32° F or below.

13. **Exterior Granite**

- a) Only natural stone approved by the cemetery may be used and these materials must have displayed their adequate resistance to temperature change and deterioration in our climate.
- b) All granite must be absolutely sound and free from seams or other defects which would impair its strength, appearance or durability.
- c) All granite must be cut with accuracy to the sizes indicated on the approved drawings.

1. **Erecting Exterior Granite:**

- a) All granite shall be set on non-staining plastic cushions. Soft wooden wedges may be used for setting for other face joints but must never be used on the exterior side of the joints. These wedges must be completely removed before pointing. The setter must be extremely careful not to leave even small pieces of wood in any of the beds or joints. Joints to have any even bearing on the face and to be set conform to jointing shown on the approved plans and with uniform face jointing shown on the approved plans and with uniform face joints to be ¼' throughout with 1/16" tolerance.
- b) All granite to be set level in full beds of cement mortar, first wetting the stone surface before laying mortar bed. Cement mortar for setting below grade to be of 1 part Portland Cement to 3 parts clean sharp sand.

- c) For above grade setting a medium strength cement-line mortar as type "N" per ASTM requirement C270-73.
- d) Depending on the shade of the stone, it is suggested 1 part of white or gray Portland Cement conforming to ASTM Designation C-150-73, one half part hydrated lime conforming to ASTM Designation C-207-49 Type S and five parts clean sharp sand conforming to ASTM Designation C-144-70.

15. **Exterior Pointing:**

- a) All joints should be approximately ¼" raked out ¾" for pointing. This ¾" may receive a ⅜" diameter polyethylene backer rod and ¾" deep bead of non-staining elastic caulking material. Another alternative is to fill the ¾" space with the elastic caulking material.
- b) This elastic caulking material can be any good brand of silicone, polysulfide or urethane strictly following or urethane strictly following the installation recommendations of the manufacturer.

16. **General Construction:**

- a) If the distance from the floor of the mausoleum to the bed of the roof stone does not exceed -  
 8'6" the wall stone must be not less than 8" thick  
 8'6" to 13' - 0" the wall stones must be not less than 10" thick  
 13'-0" to 16' - 0" the wall stones must be not less than 12" thick  
 Greater heights shall be given special consideration.

Exterior wall stones must be bonded together with bronze anchors at the top bed and wherever necessary to properly bond the building together. All stones exposed on the exterior must be 6" or more in the smallest dimension.

- b) It is recommended that entrance steps be cut from one piece where practical and be part of the base course or to be butted against base course without housing. No housing will be permitted in first course or for wings and buttresses.

- c) Top of foundation to be 2" or more below finished grade.
- d) Minimum vestibule when crypts are side loaded to be 3-6 wide. If the crypts are four or more high the minimum width shall be 4-0 and interior length to be longer than catacomb clear interior length.
- e) The masonry opening shall be sufficient to afford a clear opening between the doors at least equal to the catacomb width when doors are open.
- f) The setting of the roof stones shall be as continuous as possible.
- g) Interior floor to be 6" or more above finished grade at entrance.
- h) Roof to be so constructed that no vertical joint on the shed of the roof is exposed except for short distances such as cornice projections. These must be covered with bronze, aluminum 3-S alloy, lead or stainless joint covers. Where the roof stone below another a vertical rise of a minimum of  $\frac{1}{2}$ " shall be cut in the lower stone, unless the pitch is greater than  $\frac{1}{2}$ " to the foot. This rise shall be in line with or in back of the vertical face of the upper stone.
- i) All sloping roof stones to be provided with lugs or other satisfactory anchors to prevent shifting of stones.
- j) Washes of at least  $\frac{1}{4}$ " to the foot shall be provided wherever one stone is below another and projects horizontally beyond a vertical surface. Drips are to be provided where necessary and on roof stones. No concealing of defects or patching with composition or cementing in broken chips or pieces shall be done on the exterior or interior of the building without the approval of the owner, designer and cemetery. All exposed surfaces shall be free from unsightly tool marks, or spalling. Any defacement or work which does not meet this specification shall be corrected or removed until work has been approved and accepted.